

# NW Children's & TYA Cancer Conference 2025

Our regional conference is a partnership between all three Cancer Alliances.  
The 2025 conference is being **sponsored by the Cheshire & Merseyside Cancer Alliance.**

**Friday 7<sup>th</sup> March 2025**  
**09:00 – 16:30**  
The Spine, Liverpool, L7 3FA  
**#NWCTYA25**



@NWCCODN



FutureNHS

NorthWestTeenYoungAdultODN

In collaboration with

**Cheshire and  
Merseyside**  
Cancer Alliance



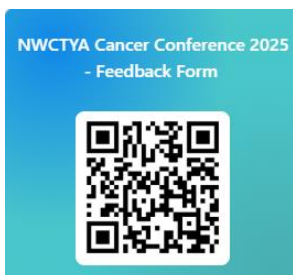
**Greater Manchester**  
Cancer Alliance



**Lancashire and  
South Cumbria**  
Cancer Alliance

# Contents

Welcome	03
How to get there	04
Conference Floor Plan	06
Exhibitors	07
Agenda	09
Linktree	11
Thank you & Evaluation	12



## Conference Feedback Survey

Please provide feedback after the event by scanning the QR Code or following the link below:

# Welcome

We are pleased to welcome you to the **NW Children's & TYA Cancer Conference 2025!**

Our regional conferences encompass collaboration and partnership working. The planned agenda contains a broad range of clinical topics, innovation and service development presentations.

Our aim of the conference is to:

- Deliver a successful networking event which appeals and benefits to a wide range of professionals.
- Showcase exhibitor's and encourage networking across the region.
- Provide fresh perspectives and insights from our expert speakers.
- Showcase tools and strategies to implement into your everyday work.
- Create new partnerships and professional relationships to drive forward collaboration.

We hope you have a lovely day. On behalf of the conference team, we look forward to working together moving forward to inspire positive change in our region for our colleagues, service users and families.

Thank you in advance for being part of this networking event.



Best Wishes,  
**Charlotte Lloyd, Conference Lead**  
Quality Improvement Lead Nurse  
NWCCODN

# How to get there

The **NW Children's & TYA Cancer Conference 2025** will take place on the 12<sup>th</sup> and 13<sup>th</sup> floor of **The Spine**. Located in Paddington Village, The Spine is at the heart of the Knowledge Quarter in Liverpool's City Centre.



## Address

The Spine,  
Paddington Village,  
Liverpool, L7 3FA

## Nearest train stations

### Liverpool Lime Street

19 min walk

### Liverpool Central

18 min walk

## Parking

### Paddington Village Car Park

Standard day tariff: **£12**

Address: Elm Grove St, Liverpool L7  
3FA

3-minute walk

### Mount Pleasant Car Park

Standard day tariff: **£5**

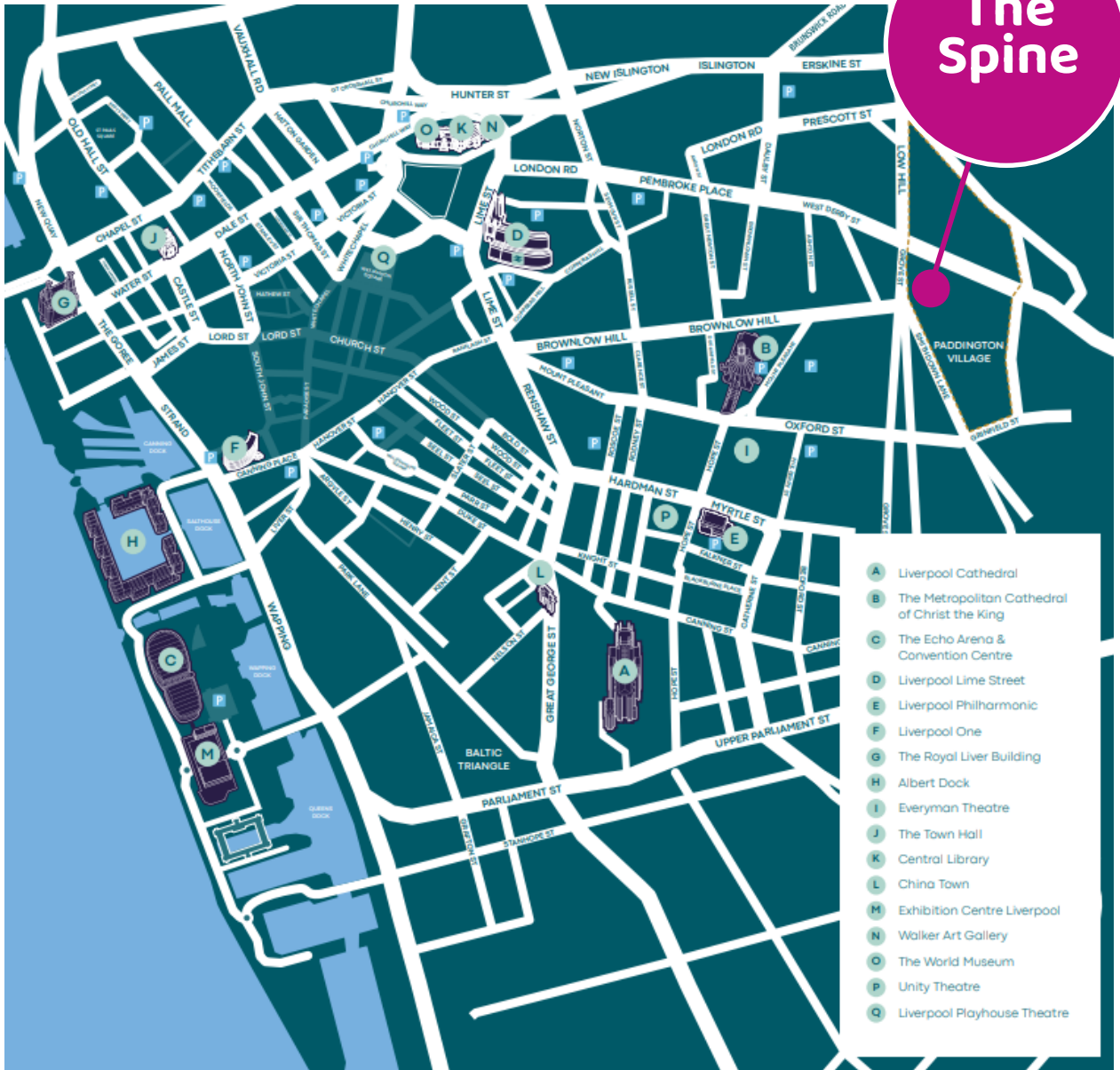
Address: 38 Mount Pleasant,  
L3 5TB

16-minute walk

*PTO for map >>>*

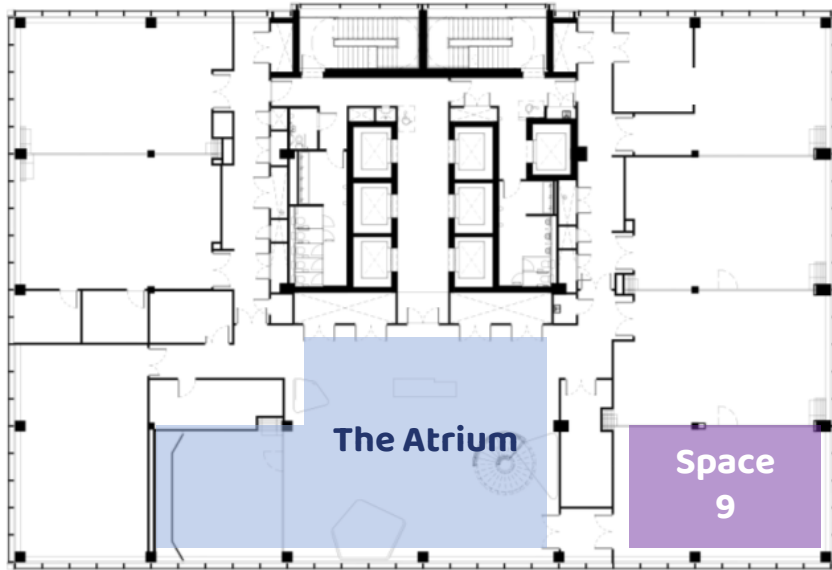
# Location map

The Spine, Paddington Village, Liverpool, L7 3FA



# Conference floor plan

## Floor 12

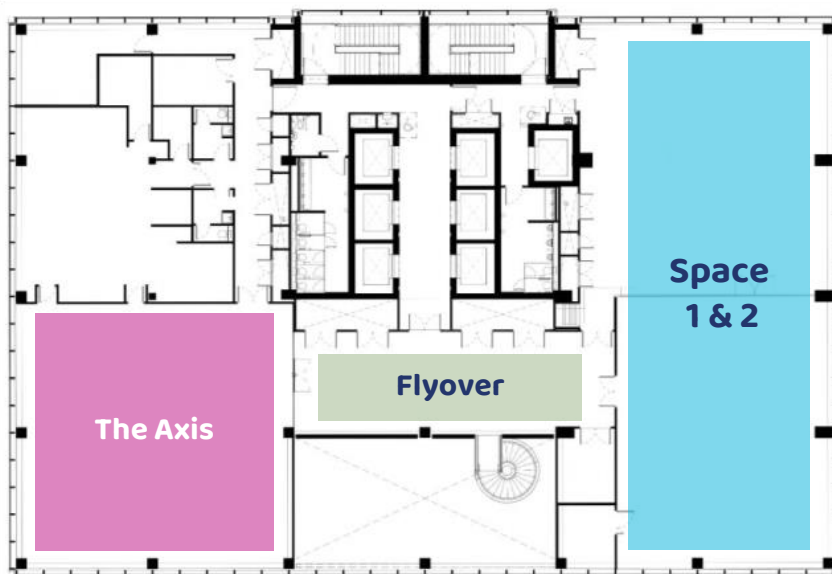


**The Atrium**  
 Welcome,  
 Registration and  
 refreshments

**The Axis**  
 Lunch Room

**Space 1 & 2**  
 Main Room &  
 Children's Breakout  
 Room

## Floor 13



**Space 9**  
 TYA Breakout Room

## Exhibitors

We are delighted that the below *exhibitors* are attending the conference to raise awareness of the vital support available to children, young people and their families.



Beads of Courage



Ellen MacArthur  
Cancer Trust



Cancer Care Map



Milly's Smiles



Claire House  
Children's Hospice



Sam's Gift

*\*select the text for the specific exhibitor to be directed to the website*

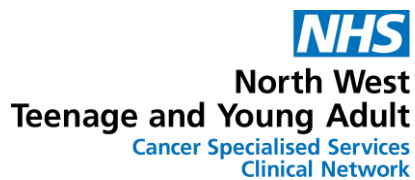
## Exhibitors continued

**Cheshire and  
Merseyside**  
**Cancer Alliance**



Joint Stall

Cheshire and Merseyside Cancer Alliance  
Cancer Academy



Joint Stall

NW Children's Cancer ODN  
NW TYA Cancer ODN



# Agenda (morning)

09.00 – 09.30

## Registration & Refreshments

Time	Item	Speaker
09.30 – 09.40	<b>Welcome &amp; Introduction</b>	Charlotte Lloyd, <i>QI Lead Nurse, NWCCODN</i> Hanna Simpson, <i>Lead Nurse, TYAODN</i>
09.40 – 09.45	<b>Introduction of Exhibitor Stalls</b>	Charlotte Lloyd, <i>QI Lead Nurse, NWCCODN</i>
09.45 – 10.15	<b>Bitesize Updates</b> – Regional NHSE – NWCCODN – NWTYAODN	Adrian Hughes, <i>Regional NHSE Representative</i> Davina Hartley, <i>NWCCODN Programme Manager</i> Rachael Hastwell, <i>NWTYAODN Programme Manager &amp; Laura Bayliff Project Manager</i>
10.15 – 11.00	<b>Lived Experience Panel</b>	Chair: Hanna Simpson, <i>Lead Nurse, TYAODN</i> <i>Lived Experience Panel members:</i> - Emmie & Eve - Hamish & Sarah - Meg - Ellie

11.00 – 11.30

## Refreshments, Networking & Exhibitor Stalls

Time	Item	Speaker
11.30 – 12.00	<b>Sarcoma Surgery &amp; Outcomes</b>	Surgical Team, Royal Orthopaedic Hospital
12.00 – 12.30	<b>Trials and Tribulations of Paediatric Care Transition into TYA Care</b>	Denise Bonney, <i>Consultant Paediatric Haematologist</i> Hanna Simpson, <i>Lead Nurse, TYAODN</i>
12.30 – 13.00	<b>Rebuilding Support</b> Improving TYAs with Cancer Engagement in Peer Support Following a Global Pandemic	Faye Hindmarsh & Franki Sefton, <i>TCT Youth Support Coordinators</i>

13.00 – 13.45

## Lunch, Networking & Exhibitor Stalls

# Agenda (afternoon)

13.45 – 15.30

## BREAKOUT SESSIONS

### Children's Cancer Breakout Sessions

#### Cancer Improvement Collaborative (National Project)

Davina Hartley, *NWCCODN Programme Manager & Amanda Saunders, Southwest CTYAODN Manager*

#### Henry's Wi-Fi

Sam Luk, *Lived Experience Rep & Anna Rarity, Cancer Experience of Care Programme Manager*

#### A Parental Guide for Neutropenic Sepsis

Chris Hardcastle, *Paediatric Acute Care Educator & Karen O'Connor, Practice Educator*

#### Educational Development of Neuro-oncology

Vicki Villalobos-Lopez, *Paediatric Neuro-Oncology Nurse Specialist*

#### Regional Innovation: Care Closer to Home

Katharine Field, *Innovation Project Officer & Charlotte Lloyd, Quality Improvement Lead Nurse*

### TYA Cancer Breakout Sessions

#### Cancer Improvement Collaborative (TYA Project)

Laura Elder, *TYA Lead Nurse & Rachael Hastwell, NWTYAODN Programme Manager*

#### TYA Education & Employment

Steve Harcourt, *Youth Support Coordinator, TCT*

#### Female Fertility Preservation

Katerina Bambang, *Consultant Gynaecologist and Subspecialist in Reproductive Medicine*

#### Staff Resilience & Psychological Safety

Becky Thomas, *Leadership Development Facilitator, FNF*

15.30 – 15.45

## Refreshments, Networking & Exhibitor Stalls

Time	Item	Speaker
15.45 – 16.20	<b>Keynote Session: North Star Vision</b>	Rosanna Thomasso, <i>Associate Director: Systemic Learning &amp; Design (YLvsC)</i>

16:20 – 16:30

## Summary & evaluation

# Linktree

We have adopted the use of Linktree as an online navigation portal for information, resources and active links for during and following the conference for your reference.

Access via the following link: [nwccodn](#) | [Instagram](#) | [Linktree](#)

## Linktree Contents

- Conference Information
- Stalls & Exhibitor direct website links
- Educational development resources and opportunities
  - Regional
  - National
  - International
- ODNs and Cancer Alliance website links

**SCAN ME**



**Linktree** 

# A huge **thank you** for attending the **NW Children's & TYA Cancer Conference 2025!**

NWCCODN Website:  
[www.nwchildrenscancerodn.nhs.uk](http://www.nwchildrenscancerodn.nhs.uk)

NWCCODN general enquiries:  
[info.nwccodn@mft.nhs.uk](mailto:info.nwccodn@mft.nhs.uk)

NWTYAODN NHS Futures:  
[NorthWestTeenAdultODN](http://NorthWestTeenAdultODN)

NWTYAODN general enquiries:  
[the-christie.tya-network@nhs.net](mailto:the-christie.tya-network@nhs.net)



Please remember to **provide feedback** after the event as this will direct future conference design and support improvement planning.

In collaboration with

**Cheshire and  
Merseyside**  
Cancer Alliance

**NHS**  
Greater Manchester  
Cancer Alliance

**NHS**  
Lancashire and  
South Cumbria  
Cancer Alliance